

LSD Deputy Report

June 21 – June 27

Dianne Napier

General Comments:

- Work is going well
- Safety (20 June):
 - One noteworthy event: B36 – electrical
 - One first aid injury: EA2 Service Bldg – wasp sting
- Coordination between PEPPo and LSD work is on track – PEPPo completed 27 June 2012
- Afternoon tunnel lockups have generally been minimally delayed.
- NE Stub (Hall D line to Tagger) opened during the day for specific requested tasks (during PEPPo run period)

Specifics:

- S&A East Arc network measurements completed, North Linac network surveys continue
- 1R: All girders removed, all stands removed → Ready for new stands
- 1S: Disconnects continue
- 2R: Magnets being removed
- 2S: Disconnects completed → Ready for stand removal
- 1A/3A: All first pass magnets removed; working on third pass magnets
- 2L22 CM: JT valve seat repaired Monday, Tuesday, Wednesday of this week then cooldown.
- 2L23 CM: Commissioning continued. Qo measurements completed. Ran all 8 cavities → 109MV achieved 6/26/12. All HOM Measurements completed.
- NE Stub (Hall D Line to Tagger): S&A monuments completed. Contractor repaired groundwater leaks – assess repair in ~2 weeks.
- 40MVA to 22MVA Tie Line work (manhole pump out and conduit installation) continues
- PEPPo run completed.



2S Ready for
Stand Removal



2R Disconnects →
magnets removal
6/21



1S
Disconnects

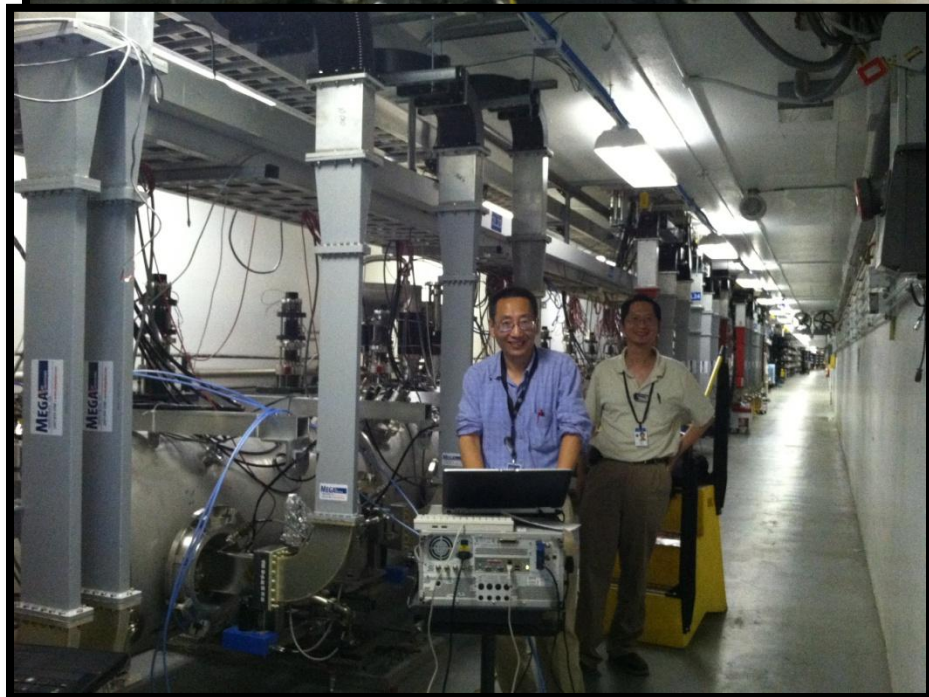


East Arc – 1st and 3rd
pass magnet removal

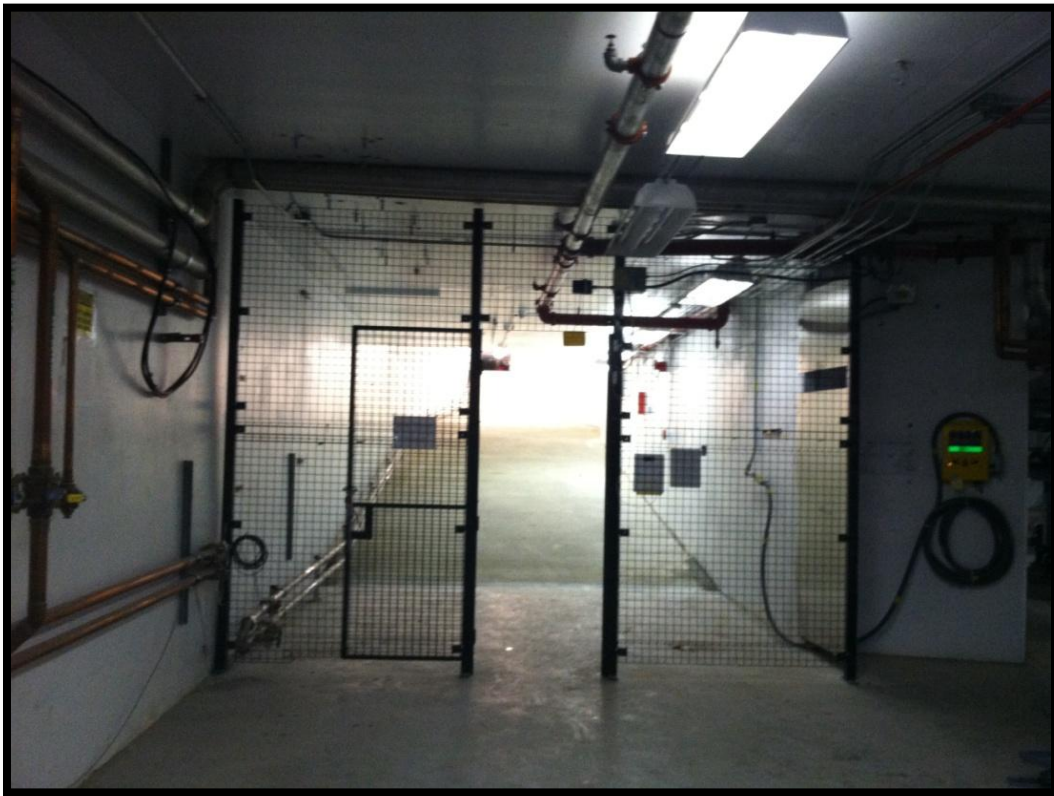


C100 -3 parked @ 1L24

2L22 JT Valve Repair



2L23 HOM Measurements completed



NE Stub Gate – Hall D
Line to Tagger Area



S&A
Monuments in
Hall D Line to
Tagger Area
Installed

SAD Calendar

Scheduled Accelerator Down

Week 26 2012

Key

- Good Plan
- Tentative Plan
- Major Event
- Incomplete Task
- Lock Up
- Utility Interruption
- Radcon Group
- Special Support
- Subset
- New/Changed
- ATLIS Task

Login

View ATLIS Work Map Help

	Sun	M	T	W	T	F	Sat
26	24	25	26	27	28	29	30
Owl	LSD: Napier PEPPo run	LSD: Napier PEPPo run	LSD: Napier PEPPo run	LSD: Napier PEPPo run	LSD: Logue Qweak studies	LSD: Logue Qweak studies	LSD: Logue
Day	PEPPo run C100-5/2L23	FEL - Cube Install 2L22 JT Valve PM 2R+ removal SL01 20 AMP CABLE NLinac S&A Substation Tie Feeder Fiber Cable Installation	FEL - Cube Align 2L22 JT Valve PM 2R+ removal SL01 20 AMP CABLE NLinac S&A Substation Tie Feeder Fiber Cable Installation	FEL - Cube Align 2L22 JT Valve PM 2R+ removal BSY hoses+ NLinac S&A Substation Tie Fiber Cable FEL RF ON	FEL Run C100-7 to 1L24 2L22 4K cooln 2R+ removal 2S stands NLinac S&A Substation Tie Fiber Cable PSS - 2L22 Cert Tour: DOE HQ	FEL Run 2L22 inst 2R+ removal 2S stands NLinac S&A Substation Tie LCW Leak TS	
Swing	PEPPo run C100-5/2L23	PEPPo run C100-5/2L23 comm	PEPPo run C100-5/2L23 comm	Qweak studies C100-5/2L23 comm	Qweak studies C100-5/2L23 comm	Qweak studies C100-5/2L23 comm	

	01	02	03	04	05	06	07
27	01	02	03	04	05	06	07
Owl	LSD: Logue	LSD: Logue	LSD: Logue	LSD: Logue	LSD: Logue	LSD: Logue	LSD: Logue
Day		FEL Run Inj CAEN HVPS inst NL viewer convrs VBV0L04A&5B thru leak 2L22 2K pumpdn 2S stands Substation Tie Feeder NLinac PSS 12GeV config NLinac S&A SEG Block removal Dosimeter Swap NLinac S&A WArc 2A align	FEL Run NL viewer convrs 2L22 inst 2S stands Substation Tie Feeder NLinac PSS 12GeV NLinac S&A SEG Block removal NLinac S&A WArc 2A align	JLab Holiday	FEL Run NL viewer convrs 2L22 inst 2S stands Substation Tie Feeder NLinac PSS 12GeV NLinac S&A SEG Block removal Tagger network NLinac S&A WArc 2A align	FEL Run NL viewer convrs 2L22 inst 2S stands Substation Tie Feeder NLinac PSS 12GeV NLinac S&A Tagger network NLinac S&A WArc 2A align	
Swing		C100-04 2L22 commiss SL24/25 RF control tests	C100-04 2L22 SL24/25 RF control		SL24/25 RF control	SL24/25 RF control	